

Psychiatric unit is set to open doors

Herald Staff

Parkland Regional Health Authority opened the doors of the Parkland Acute Psychiatric Unit to the public April 15 to let people have a look around.

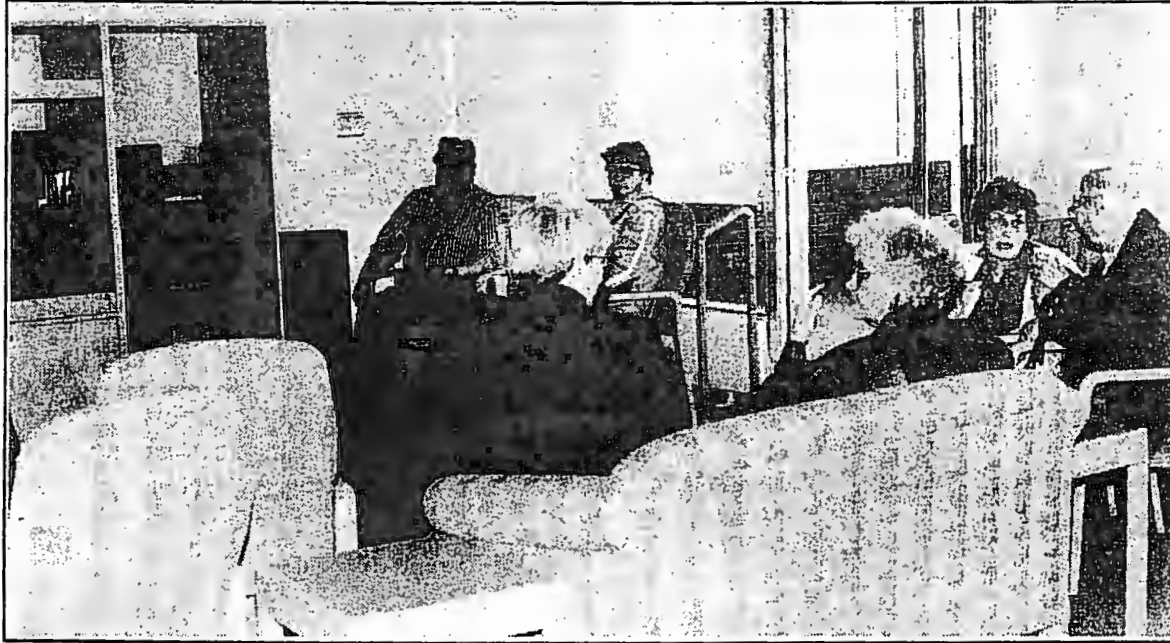
The unit, which was originally scheduled to open April 20, will now open April 27. Garry Meadows, manager of Mental Health Services, says the week delay will ensure staffing needs are met and that more orientation sessions can be conducted.

The unit is located on the fourth floor of the Dauphin Regional Health Centre. The 10-bed unit will provide short-term psychiatric care for adults.

There are nine large bed rooms on the floor, each with its own bathroom. Only one is a double room.

The unit also contains laundry facilities to ensure patients can remain as self-sufficient as possible.

Inside the front entrance is the nurses' station, with a medication and treatment room, and off to the side are offices for the co-ordinator of



A number of people took in the open house. Here, some visit in the day area.

mental health services and community mental health. There is also an office for mobile health services.

The day area is a large room with couches, a television, and a kitchen off to one side with a small eating area. Off to the other

side is a fresh air balcony lounge.

Through the day area, is an activities room and off the main area is the psychiatrist's office, two interview rooms and an office which could have a variety of uses.

"It's exciting to think this has finally arrived," said Kevin Searle of Community Mental Health, who conducted tours of the unit April 15. The unit has long been discussed.

"It will benefit the region."